

**FPCAP** Functional Polymer Aluminum Solid Electrolytic Capacitors

**Bulk Packing Quantity Unit**

Components are packaged as per following package unit.

Packing Quantity

Size (dia)	Quantity (pcs)
φ4	200
φ5	200
φ6.3	200
φ8	100 or 200
φ10	100

**Cut lead (Bulk) Dimensions**

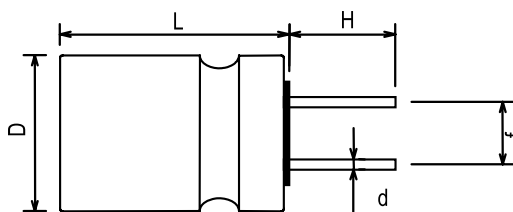
Lead Forming (Symbol: **CG**)

Nichicon P/N

: R□□□□□□□M□□1 **CG**

FPCAP P/N

: FP-□□□RE□□□M-□□ **CG**



[Unit: mm]

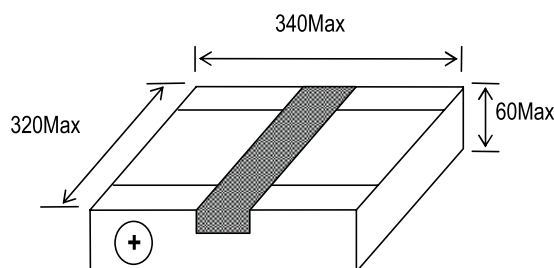
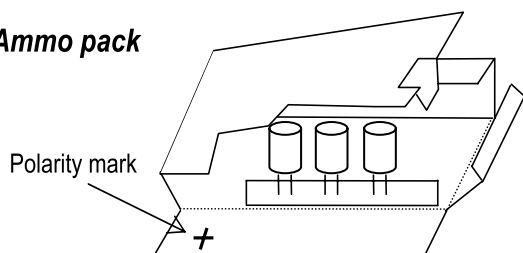
Item \ φDxL	4×5	5×8 / 5×10	6.3×7 / 6.3×8 / 6.3×10	8×6, 8×8, 8×9, 8×11.5	10×12.5
Lead Forming Symbol	CG	CG	CG	CG	CG
Lead wire diameter φd	0.45±0.05	0.45±0.05	0.45 / 0.6 / 0.5±0.05	0.6±0.05	0.6±0.05
Lead wire Length H	3.1±0.3	3.1±0.3	3.1±0.3	3.1±0.3	3.1±0.3
Lead wire interval f	1.5±0.5	2.0±0.5	2.5±0.5	3.5±0.5	5.0±0.5

**Ammo Pack Quantity Unit**

Ammo Pack and Packing Quantity

Size (dia)	Quantity (pcs)
φ5	2000
φ6.3	2000
φ8	1000
φ10	500

**Ammo pack**



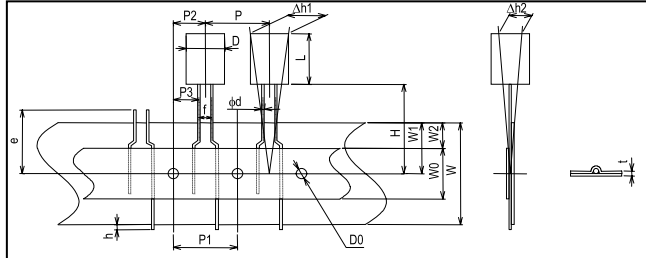
The lid of feeding side of the taping box shall be torn off at the perforation line.

# Packing Specifications

## Ammo Pack Taping Specifications (Radial lead type)

### Dimensions

#### 2.5mm pitch taping



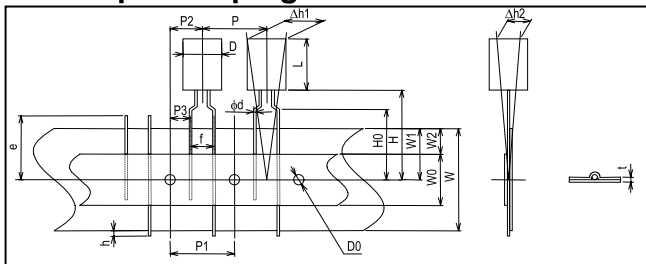
Lead Forming Symbol: JT and JX or J  
Nichicon P/N

φ5×8, φ6.3×7 to 8 : R□□□□□□□M□□1 JT  
φ5×10, φ6.3×10 : R□□□□□□□MDS1 JX

FPCAP P/N

φ5×8, φ6.3×7 to 8 : FP-□□□RE□□□□M-□□JT  
φ5×10, φ6.3×10 : FP-□□□RE□□□□M-□□J

#### 5.0mm pitch taping



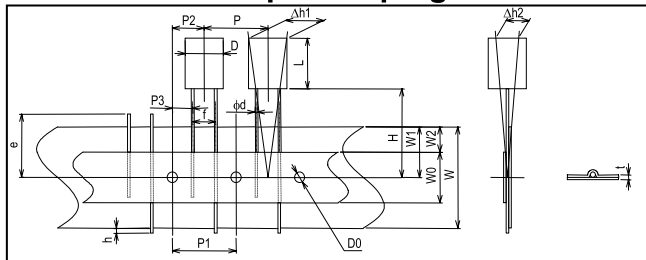
Lead Forming Symbol : PX or P  
Nichicon P/N

φ5×8 to 10, φ6.3×8 to 10, φ8×6 to 11.5  
: R□□□□□□□M□□1 PX

FPCAP P/N

φ5×8 to 10, φ6.3×8 to 10, φ8×6 to 11.5  
: FP-□□□RE□□□□M-□□P

#### 3.5mm or 5.0mm pitch taping



Lead Forming Symbol : KX or K  
Nichicon P/N

φ8×6 to 11.5 : R□□□□□□□M□□1 KX

FPCAP P/N

φ8×6 to 11.5 : FP-□□□RE□□□□M-□□K

Lead Forming Symbol: PH

Nichicon P/N

φ10×12.5 : R□□□□□□□M□□1 PH

FPCAP P/N

φ10×12.5 : FP-□□□RE□□□□M-□□PH

### Specification Table

[Unit : mm]

Item	φDxL	5x8 , 5x10 , 6.3x7, 6.3x8 , 6.3x10	8x6 , 8x8 , 8x9 , 8x11.5	10x12.5
Lead Forming Symbol		JT / JX or J	PX or P	PH
Lead wire diameter	φd	0.45 / 0.6 / 0.5 ±0.05	0.6±0.05	0.6±0.05
Lead wire interval	f	2.5±0.5	5.0 +0.8/-0.2	5.0 +0.8/-0.2
Pitch between components	P	12.7±1.0	12.7±1.0	12.7±1.0
Feed holes position gap	P1	12.7±0.3	12.7±0.3	12.7±0.3
Feed holes position gap	P2	6.35±1.0	6.35±1.0	6.35±0.5
Lead wire clinch height	H0	-	16.0±0.5	-
Components height	H	18.5±0.5	17.5±0.5	20.0±0.5
Base tape	W	18.0 +1.0/-0.5	18.0 +1.0/-0.5	18.0 +1.0/-0.5
Feed holes position gap	W1	9.0±0.5	9.0±0.5	9.0±0.5
Feed hole diameter	D0	4.0±0.2	4.0±0.2	4.0±0.2
Components alignment	Δh	2.0 max	2.0 max	2.0 max
Tape thickness	t	0.7±0.2	0.7±0.2	0.7±0.2

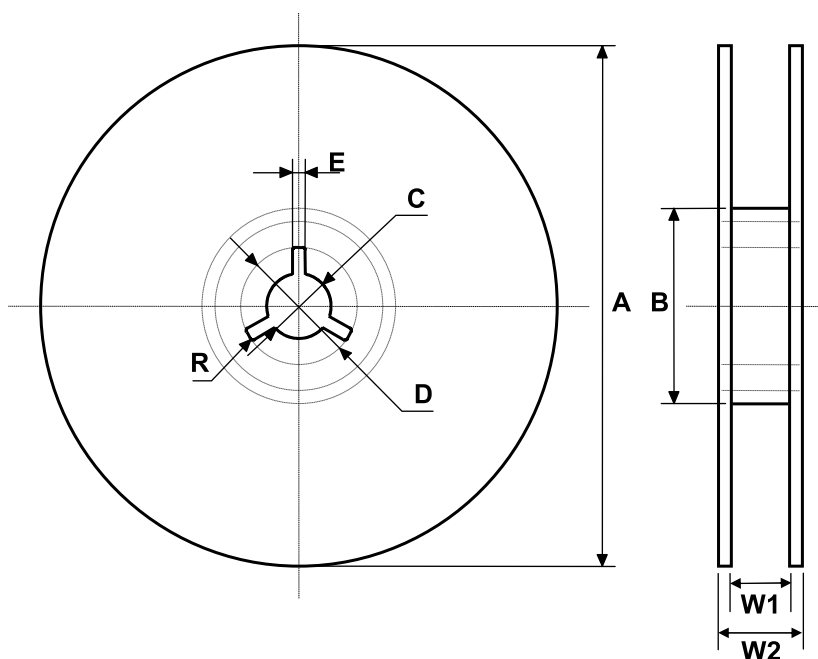
# Packing Specifications

## Packaging Unit Quantity for a Reel (SMD type)

Components are packaged as per following package unit

### Packing quantity

Case size(mm)	Quantity (pcs)
φ4×5.2L	2000
φ5×5.7L	1000
φ6.3×4.2L	1000
φ6.3×4.7L	1000
φ6.3×5.7L	1000
φ6.3×7.7L	1000
φ8×6.7L	1000
φ8×7.7L	900
φ8×11.7L	500
φ10×7.7L	500
φ10×12.4L	400



[Unit : mm]

Size (dia)	A	B	C	D	E	W1	W2	R
	±2.0	±1.0	±0.5	±1.0	±0.5	±0.8	±0.8	
φ4/φ5	380	80	13.0	21	2.0	13.4	17.4	1.0
φ6.3	380	80	13.0	21	2.0	17.4	21.4	1.0
φ8/φ10	380	80	13.0	21	2.0	25.4	29.4	1.0