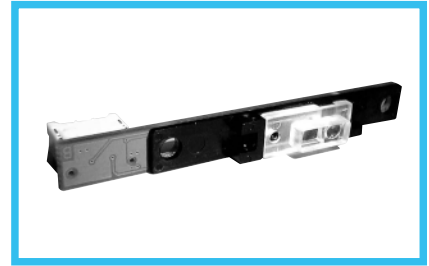


### Standard Type Toner Quantity Sensor

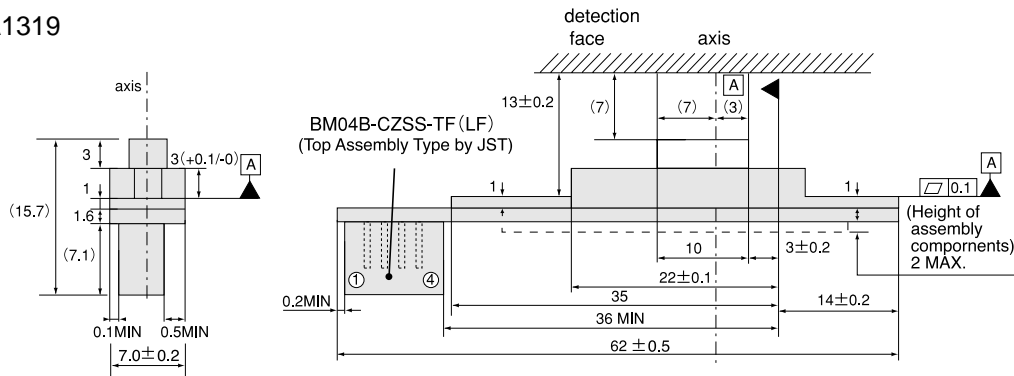
The amount of attached toner above the detection was measured by this sensor. Useful for color copier and color laser printer.



- Part Number : ZHDA1319
- Applications
  - For color copier
  - For color laser printer
- Characteristics
  - Sensor Output is not influenced by a color of toner and quantity of toner was detected by this sensor stably.
  - Sensor output is analog voltage and can be gained in proportion of the toner unattached area.
  - We can custom tune the part for your needs.
  - Nichicon can design custom-made toner quantity sensor, based on the specific demand from the customer.
  - Miniaturized with high performance by COB technology.
  - Adapted to the RoHS directive (2002/95/EC).

#### Dimensions

ZHDA1319



#### Absolute maximum ratings (Ta : 25°C)

Item	Symbol	Range	Unit
Supply voltage	Vcc	0 to + 5.5	V
Operating temperature	Topr	0 to + 55	°C
Storage temperature	Tstg	-20 to + 70	°C

#### Recommendation operating conditions

Item	Symbol	Range	Unit
Supply voltage	Vcc	+5.0 ± 0.1	V
Detection distance	Leng	6.5 to 7.5	mm

#### Sensor output, toner quantity characteristics (example)

