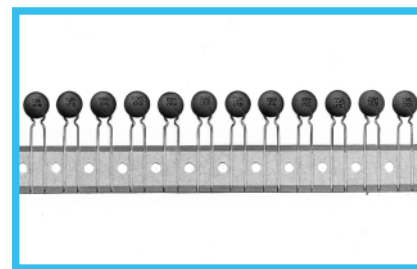
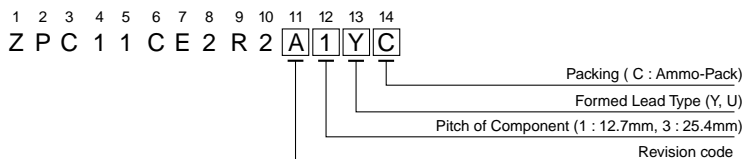
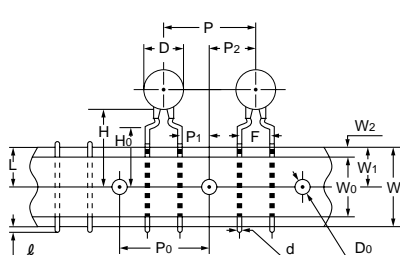


■ Taping Specifications for Automatic Insertion

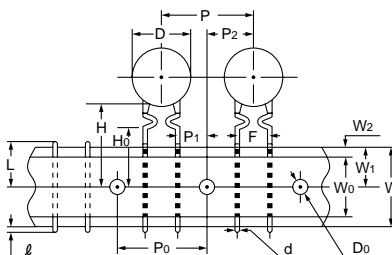
■ Type numbering system



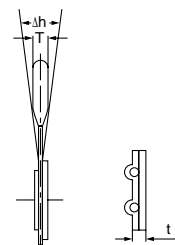
■ Taping Form



Formed lead type (Y)



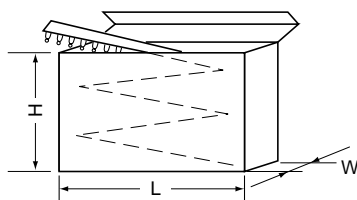
Formed lead type (U)



■ Dimensions

Item	Symbol	Dimensions (mm)		Tolerance	Note
		Nominal			
Diameter	D	Less $\phi 12$	Above $\phi 12$	—	Subject to part DWG
Thickness	T	—	—	—	Subject to part DWG
Lead dia	d	—	—	—	Subject to part DWG
Pitch of component	P	12.7	25.4	± 1.0	
Feed hole pitch	P ₀	12.7		± 0.3	
Hole center to lead	P ₁	3.85		± 0.7	
Feed hole center to component center	P ₂	6.35		± 1.3	
Lead to lead distance	F	5.0	7.5, 10.0	$+0.8$ -0.2	Subject to part DWG
Tilt of component	Δh	0		± 2.0	
Tape width	W	18.0		$+1.0$ -0.5	
Hold down tape width	W ₀	12.5		MIN.	
Slip out of hole	W ₁	9.0		$+0.75$ -0.5	
Slip out of hole down tape	W ₂	3.0		MAX.	
Height of component from tape center	H	23.5		MAX.	
Lead wire clinch height	H ₀	16.0		± 0.5	
Length of cut lead	ℓ	1.0		MAX.	
Feed hole diameter	ϕD_0	4.0		± 0.2	
Total tape thickness	t	0.6		± 0.3	
Cut length of rejected component	L	11.0		MAX.	

■ Packaging (Ammo-pack)



Symbol	Dimension (mm)
H	230
L	330
W	50