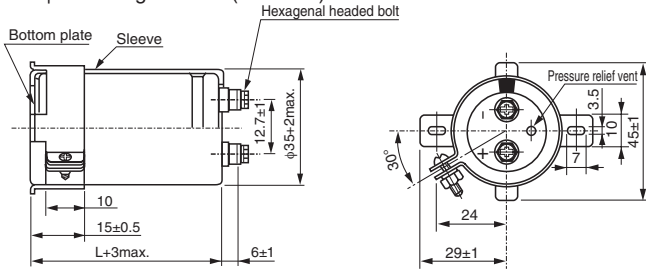


Dimension of bracket / bushing for screw terminal type

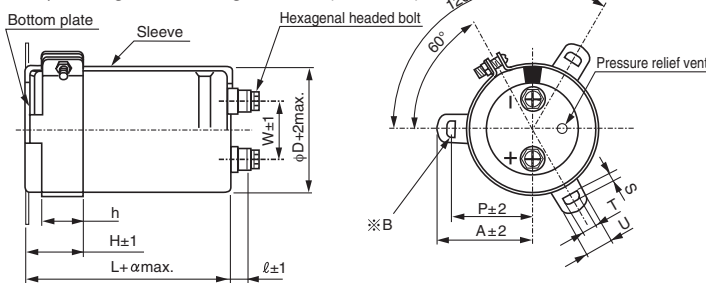
- Screw terminal type can be supplied with the following bracket and bushing.
- Here is standard position and angle of the bracket / bushing. Please contact us if you have specific requirement.
- There is a restriction for capacitors size.

Method to mount with metal bracket

For $\phi 35$: 2-leg brackets(standard)



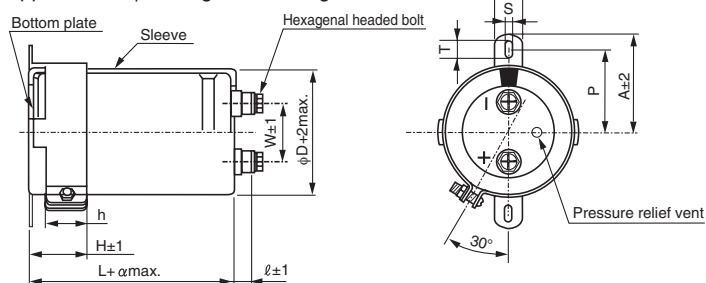
For $\phi 51$ or greater : 3-leg brackets(standard)



※ Please consult us separately for the dimensional shape of the mounting hole(B) for $\phi 90$.

		(mm)				
Symbol	ϕD	51	63.5	76.2	90	100
P		32.5	38.1	44.5	50.8	56.3
A		38.5	43	49.2	58.5	62
T		7.5	8	7	8	8
S		5	5	5	5	5
U		12	14	14	18	16
H		20	25	30	35	36
h		15	20	24	25	30
W		22	28.6	31.8	31.8	41.5
ℓ		6	6	6	6	10
α		3	3	3	3	4

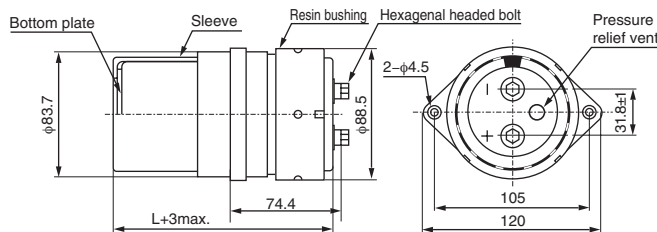
Applicable to $\phi 51$ or greater : 2-leg brackets



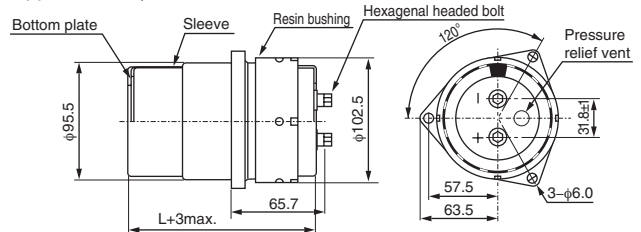
		(mm)			
Symbol	ϕD	51	63.5	76.2	90
P		33.2	40.5	46.5	53
A		40	46.5	53	59
T		6	7	6	6
S		4.5	4.5	4.5	4.5
U		14	14	14	14
H		25	35	35	35
h		15	20	20	20
W		22	28.6	31.8	31.8
ℓ		6	6	6	6
α		3	3	3	3

Method to mount with resin bushing.

Applicable to $\phi 76.2$ and $L \geq 150$

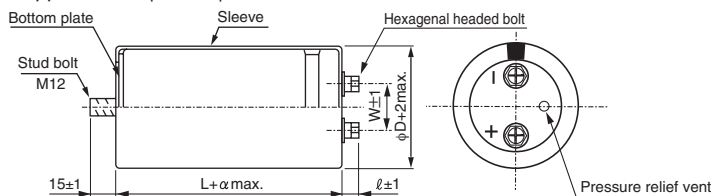


Applicable to $\phi 90$ and $L \geq 150$



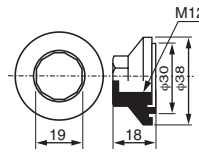
Method to mount with stud bolt.

Applicable to $\phi 51$ to $\phi 90$

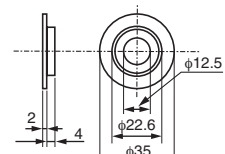


A nut for stud bolt. (option)

Plastic nut



Plastic washer



Stud bolt		(mm)			
Symbol	ϕD	51	63.5	76.2	90
W		22	28.6	31.8	31.8
ℓ		6	6	6	6
α		3	3	3	3

※ Bracket hole : $\phi 30.5\text{mm}(\text{min.})$